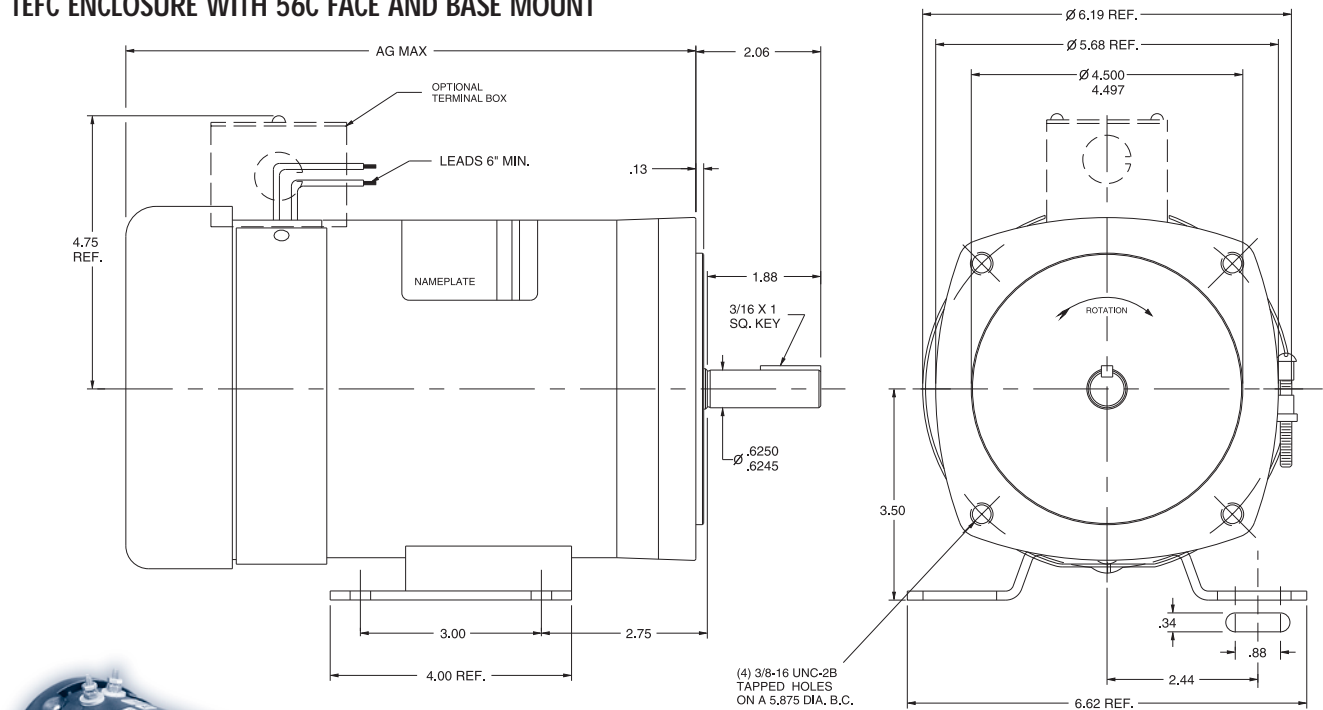


TEFC ENCLOSURE WITH 56C FACE AND BASE MOUNT

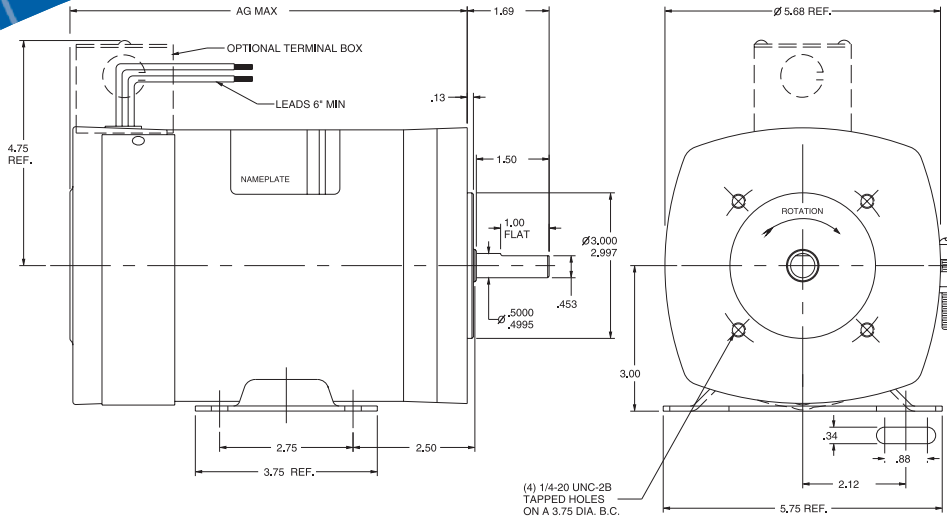


FRAME	AG
A48	7.59
B48	8.47
C48	9.34
D48	11.09
E48	12.84

TYPICAL MOTOR DATA - OTHER RATINGS AVAILABLE UPON REQUEST

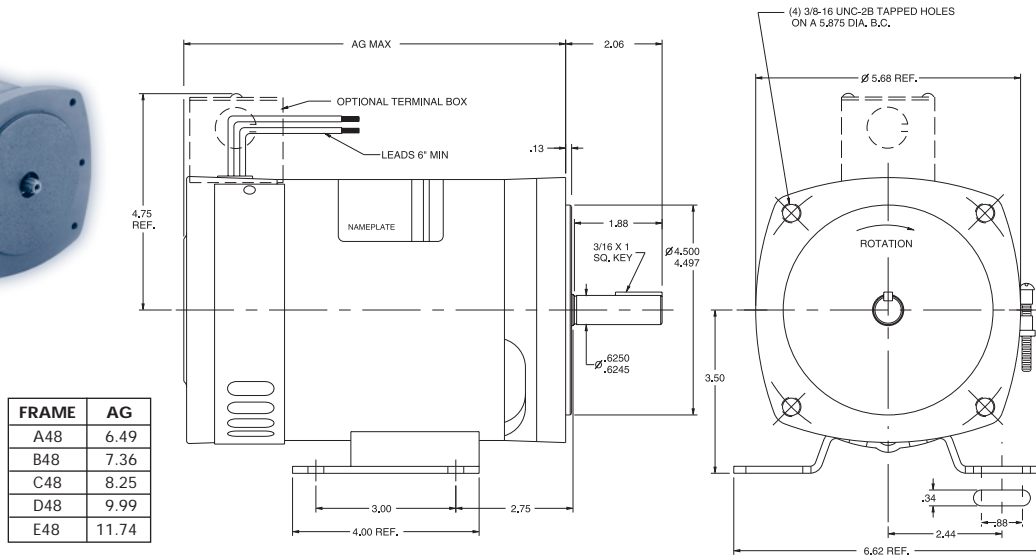
HP	RPM	VOLTS	FULL LOAD AMPS	LOCKED ROTOR AMPS	MAXIMUM ALLOW. AMPS	FULL LOAD TORQUE LB. FT.	LOCKED ROTOR TORQUE LB. FT.	DUTY	FRAME	ENCL.
1	1750	12	86	638	1045	3.0	24	CONT	D-48	OFC
1	3500	12	90	483	1568	1.5	17	CONT	C-48	OFC
1	1750	24	41	317	523	3.0	25	CONT	D-48	OFC
1	3500	24	39	900	1200	1.5	40	CONT	C-48	OFC
1	1750	36	27	203	348	3.0	25	CONT	D-48	OFC
1	3500	36	28	272	448	1.5	18	CONT	C-48	OFC
2	1750	24	81	802	1045	3.0	33	INT	D-48	OFC
2	3500	24	78	1700	2000	3.0	80	INT	D-48	OFC
2	1750	36	51	411	666	6.0	54	INT	E-48	OFC
2	3500	36	53	498	627	3.0	31	CONT	D-48	OFC

TENV ENCLOSURE WITH 48C FACE AND BASE MOUNT



FRAME	AG
A48	6.49
B48	7.36
C48	8.25
D48	9.99
E48	11.74

ODP ENCLOSURE WITH 56C FACE AND BASE MOUNT



FRAME	AG
A48	6.49
B48	7.36
C48	8.25
D48	9.99
E48	11.74

For further assistance with our motor products, visit us on-line at
www.ohioelectricmotors.com
 and/or contact our sales/technical departments at

Phone: 828/626-2901 • Fax: 828/626-2155

or E-mail: sales@ohioelectricmotors.com
 30 Paint Fork Road, P.O. Box 168 • Barnardville, NC 28709-0168



AFFILIATE OF **HB** INDUSTRIES, INC.

